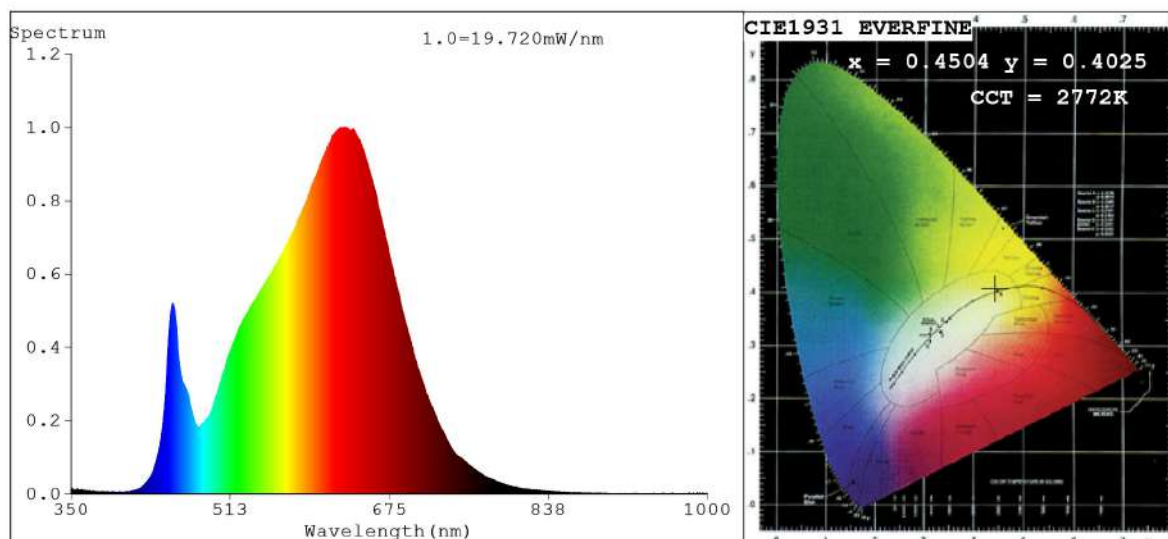


Spectrum Test Report



Color Parameters:

Chromaticity Coordinate: $x=0.4504$ $y=0.4025$ $u'=0.2600$ $v'=0.5228$
 CCT=2772K (Duv=-0.0022) Dominant WL: $\lambda_d = 584.6\text{nm}$ Purity=56.0%
 Ratio: R=26.1% G=71.4% B=2.5%; Peak WL: $\lambda_p = 629.3\text{nm}$ FWHM=157.7nm
 Render Index: Ra=94.2 CRI=91.8 TM30: Rf=91 Rg=102
 R1 =95 R2 =97 R3 =97 R4 =94 R5 =94 R6 =96 R7 =93
 R8 =87 R9 =71 R10=92 R11=94 R12=81 R13=96 R14=98 R15=93

Photo Parameters:

Flux = 911.7 lm Eff. : 67.29 lm/W $\Phi_e = 3.370\text{ W}$

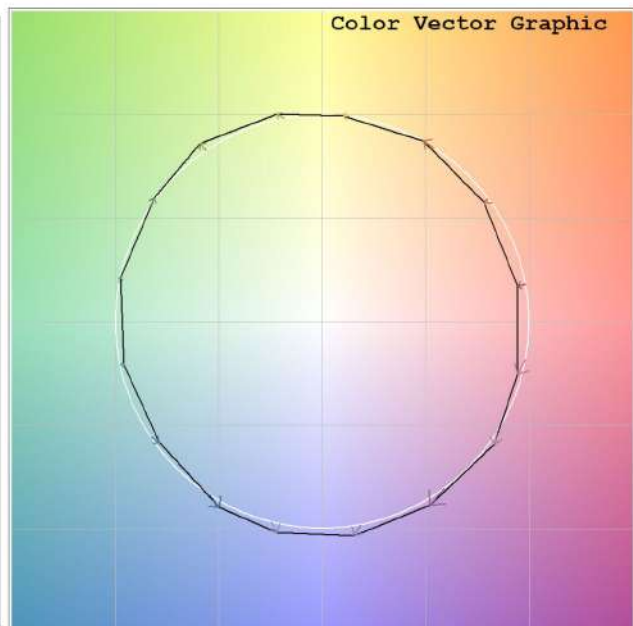
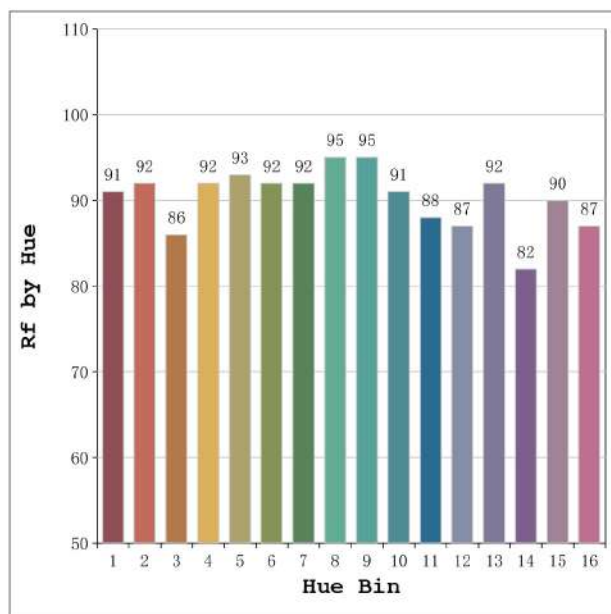
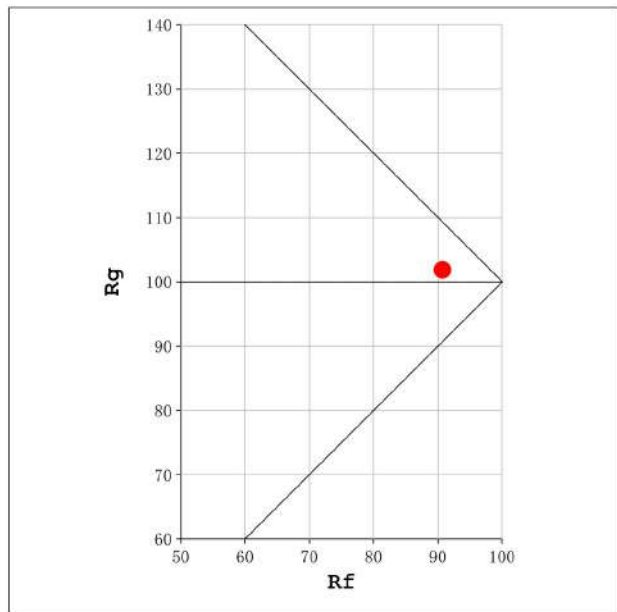
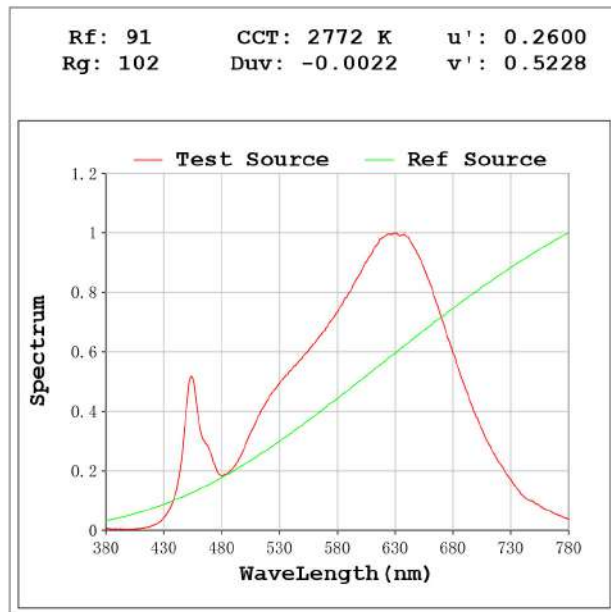
Electrical parameters:

V = 23.998 V I = 0.5646 A P = 13.55 W PF = 1.000

Status: Integral T = 1375 ms $I_p = 49148$ (75%)

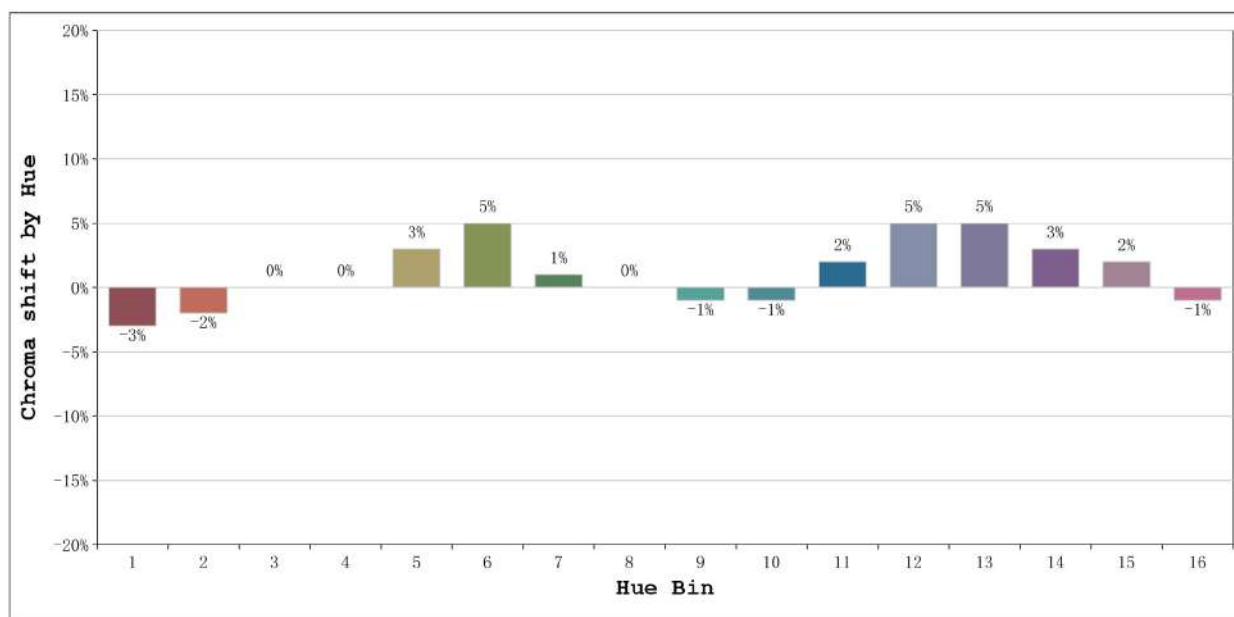
Model: Ecoled Neon 360 2700k
 Tester: Sergio Carneros
 Temperature: 23Deg
 Manufacturer: Luz Negra S.L

Number: 10.226
 Date: 2024-09-25 12:48:48
 Humidity: 51%
 Remarks: 100cm de neon



Model:Ecoled Neon 360 2700k
 Tester:Sergio Carneros
 Temperature:23Deg
 Manufacturer:Luz Negra S.L

Number: 10.226
 Date:2024-09-25 12:48:48
 Humidity:51%
 Remarks:100cm de neon



			Graphic shift(%)	
Hue Bin	Hue Angle	Rf	Chroma	Hue
1	0.0° - 22.5°	91	-3	0
2	22.5° - 45.0°	92	-2	3
3	45.0° - 67.5°	86	0	6
4	67.5° - 90.0°	92	0	3
5	90.0° - 112.5°	93	3	3
6	112.5° - 135.0°	92	5	1
7	135.0° - 157.5°	92	1	-3
8	157.5° - 180.0°	95	0	-2
9	180.0° - 202.5°	95	-1	1
10	202.5° - 225.0°	91	-1	4
11	225.0° - 247.5°	88	2	7
12	247.5° - 270.0°	87	5	4
13	270.0° - 292.5°	92	5	-3
14	292.5° - 315.0°	82	3	-9
15	315.0° - 337.5°	90	2	-5
16	337.5° - 360.0°	87	-1	-6

Model:Ecoled Neon 360 2700k
Tester:Sergio Carneros
Temperature:23Deg
Manufacturer:Luz Negra S.L

Number: 10.226
Date:2024-09-25 12:48:48
Humidity:51%
Remarks:100cm de neon